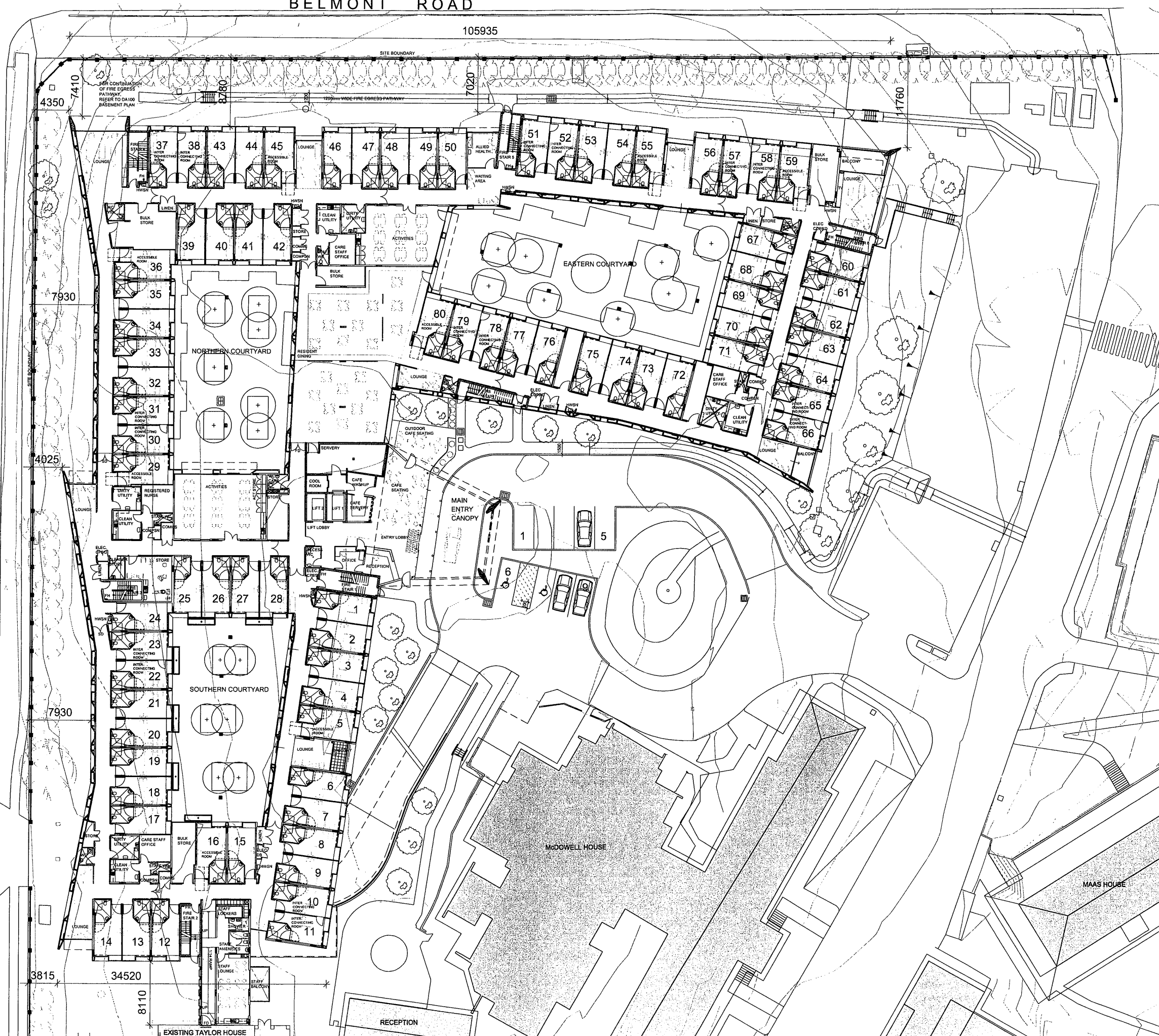


BELMONT ROAD

105935

CANTERBURY ROAD

107630



ISSUE	DESCRIPTION	APPROVED	SIGNED	DATE
P1	PRELIMINARY ISSUE	IB		04-03-2013
P2	ISSUE FOR COST UPDATE	BC		07-03-2013
P3	ISSUE FOR CLIENT REVIEW	PD		13-03-2013
P4	ISSUE FOR INFORMATION	BC		18-03-2013
P5	ISSUE FOR INFORMATION	BC		22-03-2013
P6	ISSUE FOR CLIENT REVIEW	BC		26-04-2013
P7	CO-ORDINATION ISSUE	BC		12-04-2013
P8	CO-ORDINATION ISSUE	BC		15-04-2013
P9	PRELIMINARY COSTING	BC		30-04-2013
P10	CO-ORDINATION ISSUE	BC		03-05-2013
P11	PRELIMINARY COSTING	BC		13-05-2013
P12	ISSUE FOR CLIENT REVIEW	AM		21-05-2013
P13	CO-ORDINATION ISSUE	AM		28-05-2013
P14	CO-ORDINATION ISSUE	AM		28-05-2013
A	ISSUE	AM		28-05-2013
B	ISSUE	BC		28-07-2013

CONCEPTS AND INFORMATION CONTAINED IN THIS DRAWING ARE COPYRIGHT AND MAY NOT BE REPRODUCED OR TRANSMITTED IN ANY FORM OR BY ANY MEANS, WITHOUT THE WRITTEN PERMISSION OF JACKSON TEECE. DO NOT SCALE. THIS DRAWING, ITS CONTENTS, AND ANY INFORMATION CONTAINED THEREIN, IS THE PROPERTY OF JACKSON TEECE. ANY DISSEMINATION OR USE OF THIS INFORMATION WITHOUT THE WRITTEN PERMISSION OF JACKSON TEECE IS PROHIBITED.

THIS DRAWING HAS BEEN REVIEWED FOR

[Signature] *[Signature]*
ASSOCIATE PROJECT ARCHITECT

- PROJECT MANAGEMENT**
Crown Project Services
Level 15, 3 Spring Street, Sydney NSW 2000
T: (02) 9248 4400 F: (02) 9248 4401
E: steven.shine@crownsproject.com.au
- QUANTITY SURVEYING**
Wilde & Woodland
Level 5, 815 Pacific Highway, Chateau NSW 2067
T: (02) 9411 4400 F: (02) 9411 7445
E: wilson@wildeandwoodland.com.au
- TOPOGRAPHY**
BCC Consulting Planners
55 Mount Street, Brisbane NSW 4000
T: (07) 3211 9999 F: (07) 3211 1240
E: bcc@bccplanners.com.au
- BCA ADVISORY**
Blackwell Maguire + Goldsmith
PO Box 187, Broadmeadow NSW 2007
T: (02) 9371 7777 F: (02) 9371 7774
E: david@blackwellmaguire.com.au
- LANDSCAPE ARCHITECT**
Tand
Level 8, 80 Mount Street, North Sydney NSW 2060
T: (02) 9554 3333 F: (02) 9554 3825
E: jane@tand.com.au
- CIVIL ENGINEERING**
Wood & Grive Engineers
Level 2, 415 Lonsdale Street, Sydney NSW 2000
T: (02) 9411 4400 F: (02) 9411 4400
E: kate@woodandgrive.com.au
- STRUCTURAL ENGINEERING**
Wood & Grive Engineers
Level 2, 415 Lonsdale Street, Sydney NSW 2000
T: (02) 9411 4400 F: (02) 9411 4400
E: paul@woodandgrive.com.au
- MECHANICAL ENGINEERING**
Wood & Grive Engineers
Level 2, 415 Lonsdale Street, Sydney NSW 2000
T: (02) 9411 4400 F: (02) 9411 4400
E: joshua@woodandgrive.com.au
- ELECTRICAL ENGINEERING**
Wood & Grive Engineers
Level 2, 415 Lonsdale Street, Sydney NSW 2000
T: (02) 9411 4400 F: (02) 9411 4400
E: theodore@woodandgrive.com.au
- HYDRAULIC PREVENTION ENGINEERING**
Wood & Grive Engineers
Level 2, 415 Lonsdale Street, Sydney NSW 2000
T: (02) 9411 4400 F: (02) 9411 4400
E: brayden@woodandgrive.com.au
- TRAFFIC ENGINEERING**
TEF Consulting
PO Box 215, Broadmeadow NSW 2007
T: (02) 9371 7777 F: (02) 9371 7774
E: gordon@tefconsulting.com.au
- SURVEYING**
John M Daly & Associates
PO Box 215, Broadmeadow NSW 2007
T: (02) 9371 7777 F: (02) 9371 7774
E: john@jmda.com.au
- ACOUSTIC ENGINEERING**
Wood & Grive Engineers
Level 2, 415 Lonsdale Street, Sydney NSW 2000
T: (02) 9411 4400 F: (02) 9411 4400
E: kate@woodandgrive.com.au
- BCA SECTION 1000 EFFICIENCY**
Wood & Grive Engineers
Level 2, 415 Lonsdale Street, Sydney NSW 2000
T: (02) 9411 4400 F: (02) 9411 4400
E: kate@woodandgrive.com.au
- SERVICES, CAFE & LAUNDRY DESIGN**
Universal Foodservice Designs Pty Ltd
PO Box 215, Broadmeadow NSW 2007
T: (02) 9371 7777 F: (02) 9371 7774
E: universal@foodservice.com.au
- FIRE ENGINEERING**
Innova Services Pty Ltd
PO Box 194, Haymarket NSW 1240
T: (02) 9554 3333 F: (02) 9554 3825
E: jason@innovaservices.com.au


The Whiddon Group
dignity.integrity.growth

CLIENT
THE WHIDDON GROUP

**GROUND FLOOR PLAN
STAGE 1 & 2 COMPLETE**

DATE: MARCH 2013 SCALE: @ B1 DRAWN: BC
PROJECT NUMBER: 2012087 DRAWING No: DA103 ISSUE: B

PROJECT
160 BED RESIDENTIAL AGED CARE FACILITY
81 BELMONT ROAD, GLENFIELD, NSW 2167

Jackson Teece Architecture
244 Hunter Street
Newcastle West New South Wales 2302 Australia
T: 02 4969 5199 F: 02 4969 5177
E: nnewcastle@jacksonteece.com.au
Jackson Teece Chartered Valuers Pty Ltd
Trading as Jackson Teece
ABN 14 051 971 991
Registered Architect (see Board Entry)

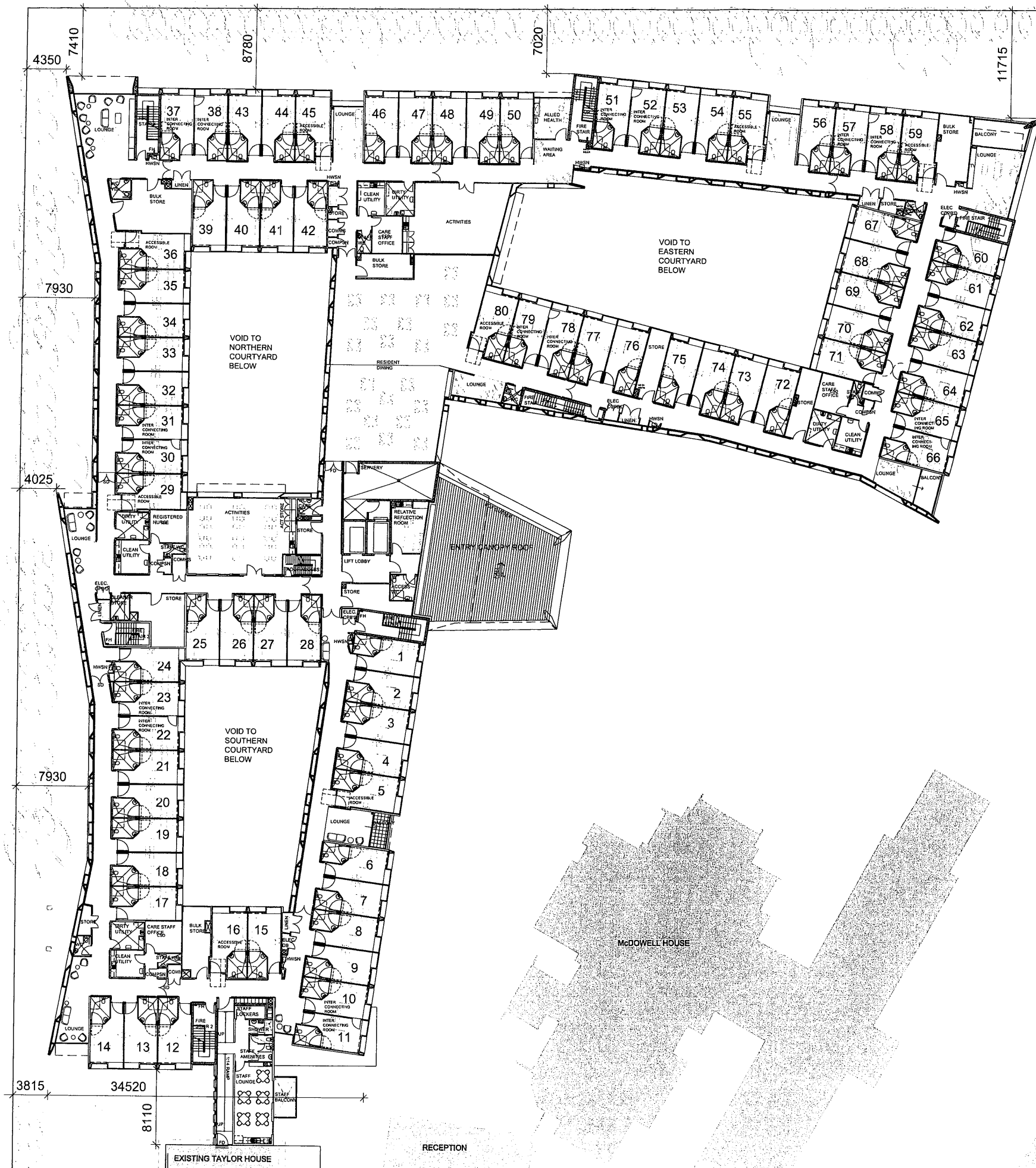
JACKSON TEECE

CANTERBURY ROAD

BELMONT ROAD

107400

107630



ISSUE	DESCRIPTION	APPROVED	SIGNED	DATE
P1	PRELIMINARY ISSUE	IB		04-03-2013
P2	ISSUE FOR COST UPDATE	IB		07-03-2013
P3	ISSUE FOR CLIENT REVIEW	PD		13-03-2013
P4	ISSUE FOR INFORMATION	BC		18-03-2013
P5	ISSUE FOR INFORMATION	BC		20-03-2013
P6	ISSUE FOR INFORMATION	BC		08-04-2013
P7	ISSUE FOR INFORMATION	BC		12-04-2013
P8	CO-ORDINATION ISSUE	BC		18-04-2013
P9	PRE-DA COSTING ISSUE	BC		23-04-2013
P10	CO-ORDINATION ISSUE	BC		13-05-2013
P11	CO-ORDINATION ISSUE	BC		16-05-2013
P12	CO-ORDINATION ISSUE	BC		21-05-2013
P13	ISSUED FOR CLIENT REVIEW	AM		22-05-2013
P14	CO-ORDINATION ISSUE	AM		28-05-2013
P15	CO-ORDINATION ISSUE	AM		30-05-2013
A	DA ISSUE	AM		28-07-2013
B	DA MODIFICATION	BC		

CONCEPTS AND INFORMATION CONTAINED IN THIS DRAWING ARE COPYRIGHT AND MAY NOT BE REPRODUCED IN WHOLE OR PART OR BY ANY MEANS, WITHOUT THE WRITTEN PERMISSION OF JACKSON TEECE. DO NOT SCALE THIS DRAWING. USE FOR CONSTRUCTION ONLY. VERIFY ALL PROJECT DIMENSIONS BEFORE COMMENCING CONSTRUCTION WORK ON-SITE. FABRICATE AND ERECT JACKSON TEECE OF ANY DIMENSIONS AND SPECIFICATIONS.

THIS DRAWING HAS BEEN REVIEWED FOR

[Signature] *[Signature]*
ASSOCIATE PROJECT ARCHITECT

PROJECT MANAGEMENT
Crown Project Services
Level 15, 2 Spring Street, Sydney NSW 2000
T: (02) 9554 4400 F: (02) 9554 4430
E: info@cpsproject.com.au

QUANTITY SURVEYING
Willis & Woodland
Level 6, 115 Pacific Highway, Chatswood NSW 2067
T: (02) 9411 7540 F: (02) 9411 7545
E: info@willisandwoodland.com.au

TOWN PLANNING
BDC Consulting Planners
15 Mount Street, Sydney NSW 2007
T: (02) 9411 7540 F: (02) 9411 7545
E: info@bdcplanners.com.au

SCA ADVISORY
Blackett Maguire + Goldsmith
Level 15, 2 Spring Street, Sydney NSW 2000
T: (02) 9554 4400 F: (02) 9554 4430
E: info@blackettmaguire.com.au

LANDSCAPE ARCHITECT
Tract
Level 8, 88 Mount Street, North Sydney NSW 2060
T: (02) 9554 4400 F: (02) 9554 4430
E: info@tract.com.au

CIVIL ENGINEERING
Wood & Grievs Engineers
Level 15, 2 Spring Street, Sydney NSW 2000
T: (02) 9554 4400 F: (02) 9554 4430
E: info@woodandgrievs.com.au

STRUCTURAL ENGINEERING
Wood & Grievs Engineers
Level 15, 2 Spring Street, Sydney NSW 2000
T: (02) 9554 4400 F: (02) 9554 4430
E: info@woodandgrievs.com.au

MECHANICAL ENGINEERING
Wood & Grievs Engineers
Level 15, 2 Spring Street, Sydney NSW 2000
T: (02) 9554 4400 F: (02) 9554 4430
E: info@woodandgrievs.com.au

ELECTRICAL ENGINEERING
Wood & Grievs Engineers
Level 15, 2 Spring Street, Sydney NSW 2000
T: (02) 9554 4400 F: (02) 9554 4430
E: info@woodandgrievs.com.au

HYDRAULIC ENGINEERING
Wood & Grievs Engineers
Level 15, 2 Spring Street, Sydney NSW 2000
T: (02) 9554 4400 F: (02) 9554 4430
E: info@woodandgrievs.com.au

TRAFFIC ENGINEERING
TEF Consulting
Level 15, 2 Spring Street, Sydney NSW 2000
T: (02) 9554 4400 F: (02) 9554 4430
E: info@tefconsulting.com.au

SURVEYING
John M Daly & Associates
PO Box 25, Campbelltown NSW 2560
T: (02) 4623 2653 F: (02) 4623 2653
E: info@jmdaly.com.au

ACOUSTIC ENGINEERING
Wood & Grievs Engineers
Level 15, 2 Spring Street, Sydney NSW 2000
T: (02) 9554 4400 F: (02) 9554 4430
E: info@woodandgrievs.com.au

SCA SECTION 1 ENERGY EFFICIENCY
Wood & Grievs Engineers
Level 15, 2 Spring Street, Sydney NSW 2000
T: (02) 9554 4400 F: (02) 9554 4430
E: info@woodandgrievs.com.au

SERVICES, CAFE & LAUNDRY DESIGN
Universal Foodservice Designs Pty Ltd
PO Box 235, Cammeray NSW 2050
T: (02) 9554 4400 F: (02) 9554 4430
E: info@universalfoodservice.com.au

FIRE ENGINEERING
Innova Services Pty Ltd
PO Box 118, Newmarket NSW 1505
T: (02) 9554 4400 F: (02) 9554 4430
E: info@innovaservices.com.au


The Whiddon Group
dignity·integrity·growth

CLIENT
THE WHIDDON GROUP

**FIRST FLOOR
STAGE 1 & 2 COMPLETE**

DATE	SCALE @ B1	DRAWN
MARCH 2013	1:200	BC
PROJECT NUMBER	DRAWING No.	ISSUE
2012087	DA104	B

PROJECT
160 BED RESIDENTIAL AGED CARE FACILITY
81 BELMONT ROAD, GLENFIELD, NSW 2167

Jackson Teece Architecture
244 Hunter Street
Newcastle West New South Wales 2302 Australia
T: 02 4966 2100 F: 02 4966 0477
E: info@jacksonteece.com
Jackson Teece Architects Pty Ltd
The Whiddon Group
ABN 15 481 817 400
Sydney and Australia (a/c)

JACKSON TEECE